



Purpose Taskworx® Tile

| | | |
|--------------------------|-------------|---|
| Style Number | 5T337 | |
| Collection | District | |
| Product Type | Carpet Tile | |
| Construction | Standard | Data + Performance |
| Type of Manufacture | ISO 2424 | tufted 1/10" 39.4 per 10cm |
| Aspect | ISO 2424 | Multi-Level Pattern Loop |
| Dye Method | EN 994 | 100% Solution Dyed |
| Dimensions | EN 994 | 50 cm x 50 cm 20 tiles (5 m²) per box |
| Primary Backing | ISO 2424 | Pet Non-Woven |
| Secondary Backing | ISO 2424 | Taskworx® Tile Polymer Modified Bitumen |
| Pile Fibre Composition | ISO 2424 | Eco Solution Q® Polyamide 6 |
| Total Thickness | ISO 1765 | 6.2 mm |
| Effective Pile Thickness | ISO 1766 | 2.0 mm |
| Total Mass | ISO 8543 | 4084 g/m² |
| Nominal Total Pile Mass | ISO 2424 | 474 g/m² |
| Effective Pile Mass | ISO 8543 | 217 g/m² |
| Pile Density | ISO 8543 | 0.106 g/cm³ |
| Total Recycled Content | | 51% (pre-consumer 51% post-consumer 0%) |



Performance

| | | |
|---------------------------------|---------------|----------------------------|
| Number of Tufts | ISO 1763 | 153,000/m² 38.7 per 10cm |
| Electrostatic Propensity | ISO 6356 | ≤ 2.0 kv (Stroll Test) |
| Use Classification | EN 1307 | 33 Commercial Heavy |
| Luxury Class | EN 1307 | LC1 |
| Dimensional Stability | EN 986 | ≤ 0.2% |
| Impact Sound Insulation | ISO 10140 | 25db |
| Sound Absorption Classification | ISO 354/11654 | 0.15 Aw Class E |
| Thermal Resistance m² K/W | ISO 8302 | 0.081 M² K/W Tog 0.81 |
| Dry Slip Resistance | ISO 13893 | Pass / No Pulled Loops |
| Colour Fastness To Light | ISO 105-B02 | >6 |
| Flammability | EN 13501-1 | Bfl-S1 (Adhered Testing) |
| Castor Chair | EN 985 | ≥2.4 Continuous Use |

15 Year Commercial Limited Warranty subject to installation in full accordance with manufacturer's instructions and a regular effective cleaning and maintenance programme.

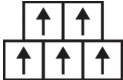
Recommended Installation Method



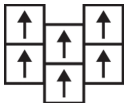
Monolithic



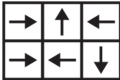
Quarter Turn



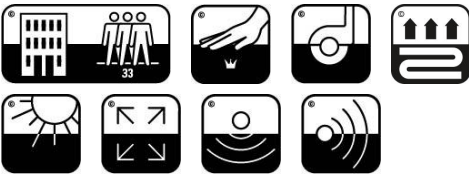
Brick



Ashlar



Random



25dB

Corporate Headquarters +1 800 257 7429 | +1 706 532 7984 | Atlanta +1 404 853 7429 | Bengaluru +91 80 6773 0202 | Beijing +86 10 6568 588 | Chicago +1 312 467 1331 | Dubai +971 4 584 6956 | Hong Kong +852 2623 0371 | Latin America (Miami) +1 305 827 5912 | London +44 207 961 4120 | Los Angeles +1 800 233 1614 | Melbourne +61 3 9939 8543 | Mexico City +55 5010 7600 | Mumbai +91 22 6284 5050 | Nantong +86 400 800 7429 | New York +1 212 953 7429 | Paris +33 (0) 1 81 22 44 39 | San Francisco +1 415 955 1920 | Santiago +562 2431 5000 x 550 | São Paulo +55 11 3071 1702 | Shanghai +86 21 3338 4000 | Singapore +65 6733 1811 | Sydney +1 800 556 302

Coordinating Products

Carpet Tile: **Intent Taskworx® Tile, Situation Taskworx® Tile**

Material Health & Environmental Certifications

Certifications below apply exclusively to the carpet tile rug itself and not the LokWorx Tabs adhesive

Declaration of Performance

EU.DOP/0493/CPR/0621/0422/BT

Building Research Establishment (BRE)

A+ Health/A+ Retail 0.301/0.399 Ecopoints

Country of Origin**

United Kingdom

BREEAM Contribution Credit

**Certificate of Approval
Schools/Offices/Health/Industrial Shed
Retail**

Air Quality

Indoor Air Comfort Gold

Certified

M1

Certified

Memberships

WGBC Framework

WGBC Framework

UKGBC

UKGBC

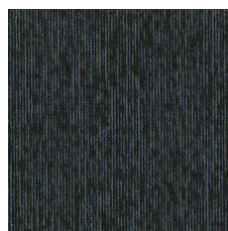
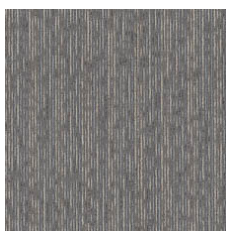
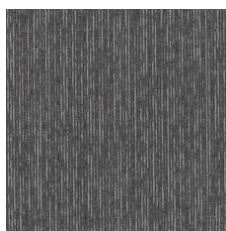
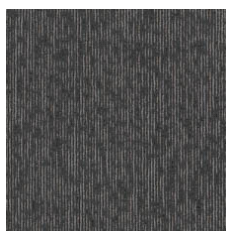
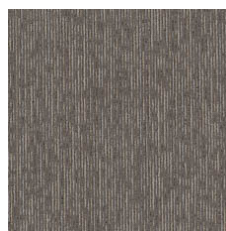
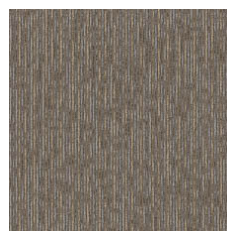
Emirates Green Building Council

Emirates Green Building Council

Chemsec

Chemsec

Light Reflectance Value

Stellar 08505
LRV 3.3Skylight 08530
LRV 12.9Nocturne 08557
LRV 8.3Shale 08597
LRV 5.7Woodsmoke 08760
LRV 10Sierra 08761
LRV 11.6 **Quick Ship** In Stock - UK

Additional Information

15 year commercial limited warranty

Specifications are subject to nominal manufacturing variance. Material supply and/or manufacturing processes may necessitate changes without notice.

This product is an exclusive design and may not be duplicated in any manner. Use of this design in the creation of another product design is also strictly prohibited.

Visit shawcontract.com/testing for more information.

Corporate Headquarters +1 800 257 7429 | +1 706 532 7984 | Atlanta +1 404 853 7429 | Bengaluru +91 80 6773 0202 | Beijing +86 10 6568 588 | Chicago +1 312 467 1331 | Dubai +971 4 584 6956 | Hong Kong +852 2623 0371 | Latin America (Miami) +1 305 827 5912 | London +44 207 961 4120 | Los Angeles +1 800 233 1614 | Melbourne +61 3 9939 8543 | Mexico City +55 5010 7600 | Mumbai +91 22 6284 5050 | Nantong +86 400 800 7429 | New York +1 212 953 7429 | Paris +33 (0) 1 81 22 44 39 | San Francisco +1 415 955 1920 | Santiago +562 2431 5000 x 550 | São Paulo +55 11 3071 1702 | Shanghai +86 21 3338 4000 | Singapore +65 6733 1811 | Sydney +1 800 556 302

© 2024 Shaw Industries Group, Inc., a Berkshire Hathaway Company
April 28, 2024

2 of 2